



FOR SALE : CHALET

Chemin de Bans | 1996 Condémines (Nendaz) | Reference : 5080426

CHF 280,000.-

TABLE OF CONTENTS

Description page	3
Detailed characteristics and conveniences	4
Big pictures	6
Financial simulation	19

FOR SALE : CHALET

CH-1996 Condémines (Nendaz) | Chemin de Bans | **CHF 280,000.-**



CHARACTERISTICS

Reference: **5080426**

Type: **Chalet**

Availability: **Immediate**

rooms: **3.5**

Bedrooms: **2**

Bathroom: **1**

Flat: **1**

Living area: **~ 48 m²**

Weighted Surface: **~ 60 m²**

Ground surface: **~ 1280 m²**

Year of construction: **1900**

Latest renovations: **2014**

CHARACTERISTICS

CH-1996 Condémines (Nendaz) | Chemin de Bans | **CHF 280,000.-**

CHARACTERISTICS

Availability	Immediate	Flat	1
Type	Chalet	Number of terraces	1
Reference	5080426	Total number of floors	2
Second home	Authorized	Altitude	1,100 m
rooms	3.5	Condition of the property	Good
Bedrooms	2	Living area	~ 48 m²
Bathroom	1	Ground surface	~ 1280 m²
Number of toilets	2	Weighted Surface	~ 60 m²
Year of construction	1900	Terrace surface	~ 9 m²
Latest renovations	2014	Exterior parking	10 included

CONVENIENCES

NEIGHBOURHOOD

- Green
- Mountains
- Child-friendly

OUTSIDE CONVENIENCES

- Terrace/s
- Quiet
- Shed
- Garden
- Greenery

ORIENTATION

- North
- East
- West
- South

EXPOSURE

- Optimal
- All day

VIEW

- Nice view
- Unobstructed
- With an open outlook
- Clear
- Panoramic
- Rural

- Garden

- Forest

- Mountains

FIRSTVIEW



PICTURE(S)









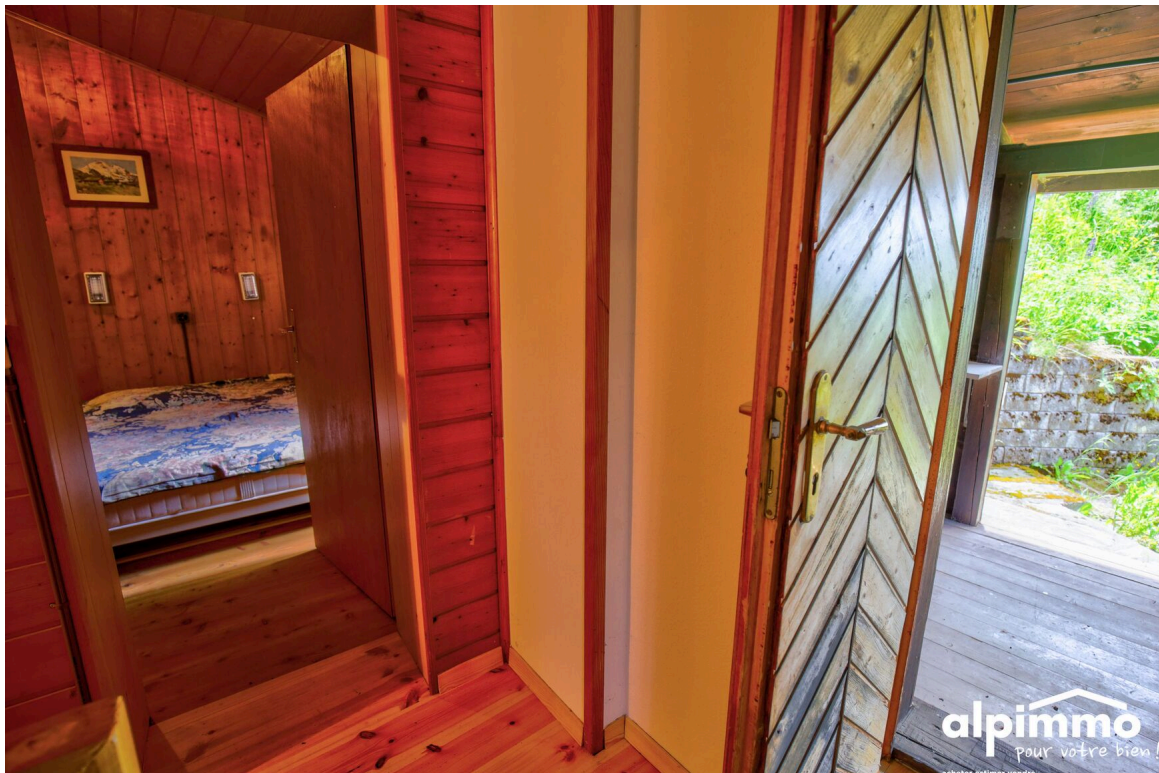










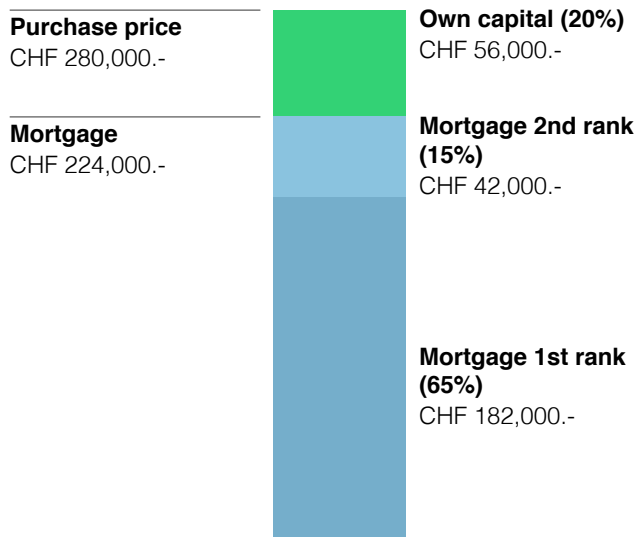




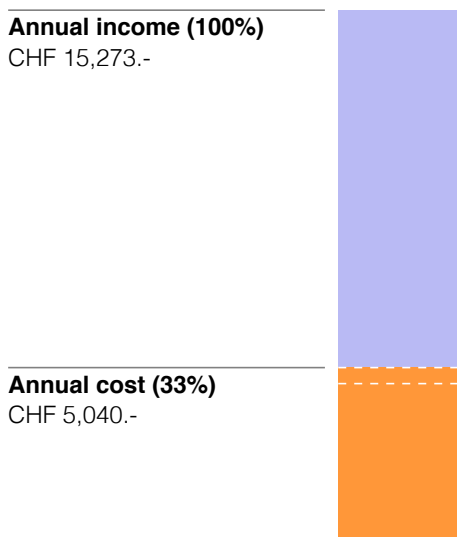


FINANCIAL SIMULATION

FINANCING



FINANCIAL CAPACITY



PRICE

Price of object	CHF 280,000.-
Acquisition costs	3 % CHF 8,400.-
Transfer costs	0 % CHF 0.-
Expenses of creation of mortgage file	1 % CHF 2,240.-
Total acquisition	CHF 290,640.-

ANNUAL COSTS

Mortgage interest 1st rank	1.50 %	CHF 2,730.-
Mortgage interest 2nd rank	1.60 %	CHF 672.-
Mortgage interest		CHF 3,402.-
Amortization mortgage 1st rank	1 %	CHF 1,820.-
Amortization mortgage 2nd rank	1 %	CHF 420.-
Total mortgage amortization		CHF 2,240.-
Running/maintenance costs	1 %	CHF 2,800.-
Total charges		CHF 2,800.-
Total per year		CHF 8,442.-
Total per month		CHF 704.-