

## Large chalet, like new at la Tena, Nendaz!

**Favorite**



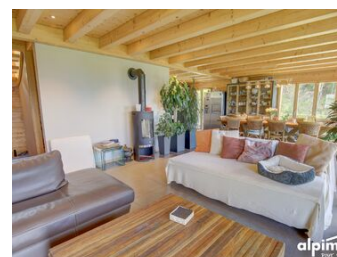
Chemin de Tsamandon 298  
1997 Haute-Nendaz  
Reference: #5164450

## LARGE CHALET, LIKE NEW AT LA TENA, NENDAZ!

CHF 2'600.- / month

CH-1997 Haute-Nendaz, Chemin de Tsamandon 298

**Favorite**



### Description

Large chalet, like new at la Tena, Nendaz!

This beautiful larch wood chalet offers all the comfort and space you could wish for. Situated at "la Tena" on the edge of the forest, this peaceful location offers a magnificent view of the mountains and forest. A real haven of peace for your holidays or for living here all year round. The ski bus runs nearby, providing easy access to the 4Vallées ski area.

The layout of the chalet is as follows:

Ground floor :

- 1 living room that can be converted
- 1 double bedroom
- 1 shower room
- 1 utility room
- 1 entrance hall

Upper ground floor :

- 1 large living room
- 1 open kitchen with dining area
- 1 guest WC
- 1 entrance hall

1st floor :

- 3 double bedrooms
- 1 bathroom
- 1 shower room
- 1 office or TV area

The downstairs lounge offers a host of design possibilities: home cinema, children's playroom, carnotzet, etc.

The property has a carport for 2 vehicles. Beautiful outdoor spaces with barbecue and easy access all year round.

### Characteristics

Reference : #5164450

Type : Chalet

Number of floors : 3

Number of rooms : 6.5

Number of bedrooms : 4

Number of bathrooms : 4

Living area : ~ 168 m<sup>2</sup>

Surface of parcel : ~ 954 m<sup>2</sup>

Weighted Surface : ~ 188 m<sup>2</sup>

Year of construction : 2019

Heating system : Heat pump

Domestic water heating system :

Heat pump

Service costs : Not specified

Availability : Immediately

Outside parking place/s : 4  
included

## Characteristics

Reference	#5164450	Number of flats	2
Number of floors	3	Number of rooms	6.5
Number of bedrooms	4	Number of bathrooms	4
Number of balcony	2	Living area	~ 168 m <sup>2</sup>
Weighted Surface	~ 188 m <sup>2</sup>	Surface of parcel	~ 954 m <sup>2</sup>
Balcony Surface	~ 44 m <sup>2</sup>	Year of construction	2019
Heating system	Heat pump	Domestic water heating system	Heat pump
Heating installation	Floor	Availability	Immediately
Service costs	Not specified	Outside parking place/s	4 included
Altitude	1350 m		

## Conveniences

### Neighbourhood

- Villa area
- Green
- Mountains
- Bus stop
- Child-friendly
- Sports centre
- Near a golf course
- Tennis centre
- Ski piste
- Ski resort
- Ski lift
- Cross-country ski trail
- Hiking trails
- Bike trail
- Doctor

### Outside conveniences

- Balcony/ies
- Garden
- Quiet
- Greenery
- Covered parking space(s)

### Inside conveniences

- Open kitchen

### Equipment

- Furnished kitchen
- Fitted kitchen
- Cooker/stove
- Ceramic glass cooktop
- Induction cooker
- Ceramic WOK
- Oven
- Steamer
- Warming drawer
- Microwave
- Fridge
- Freezer
- Wine cooler
- Dishwasher
- American Fridge
- Built-in coffee machine
- Washing machine
- Dryer
- Bath
- Shower

---

**Floor**

- Tiles
- Parquet floor

**Condition**

- As new

**Orientation**

- North
- South
- East
- West

**Exposure**

- Optimal
- All day

**View**

- Nice view
- Clear
- Unobstructed
- Panoramic
- Forest
- Mountains

Pictures





































